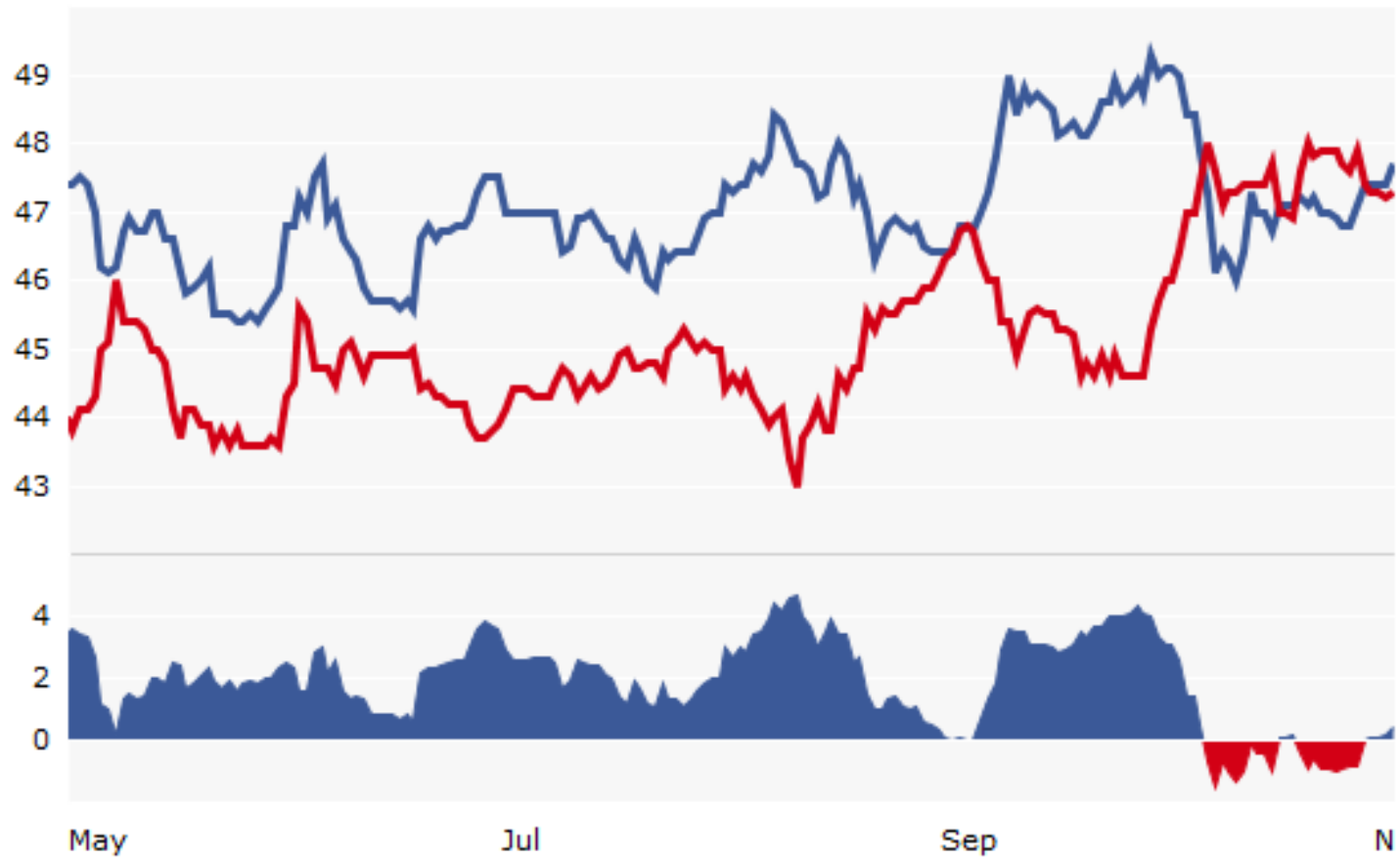
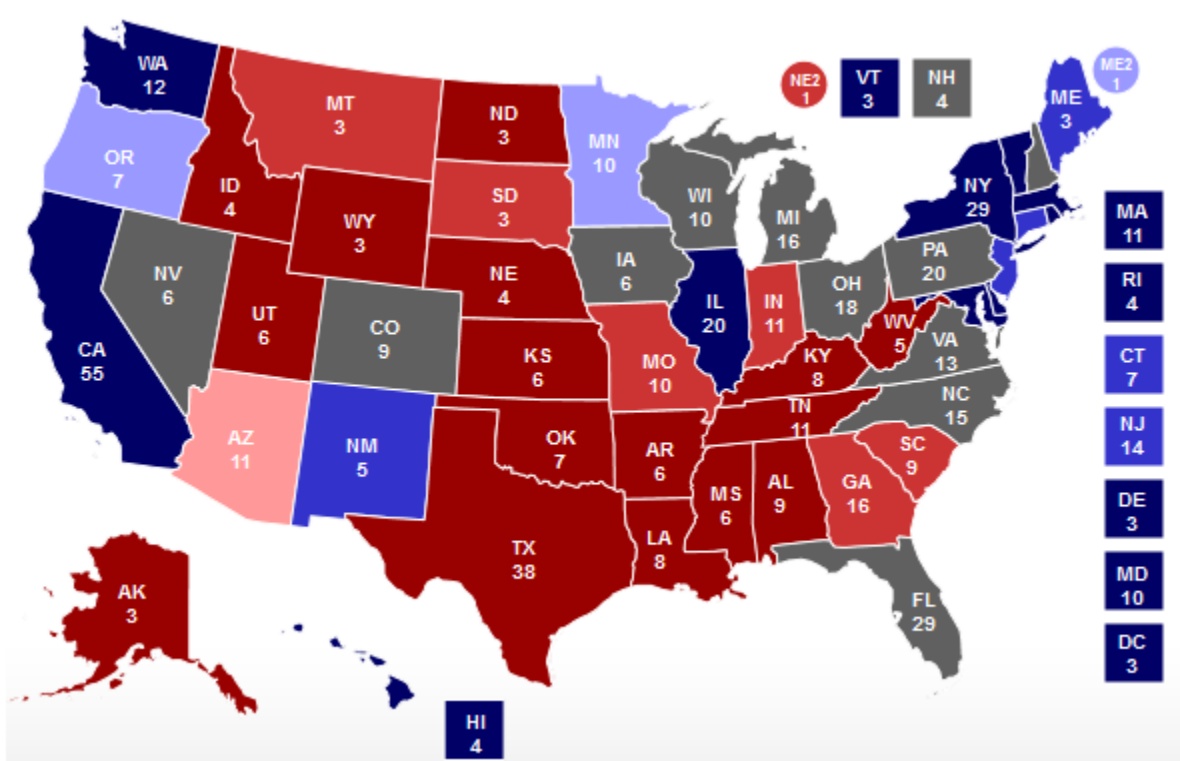


National Poll Average: Nov. 4



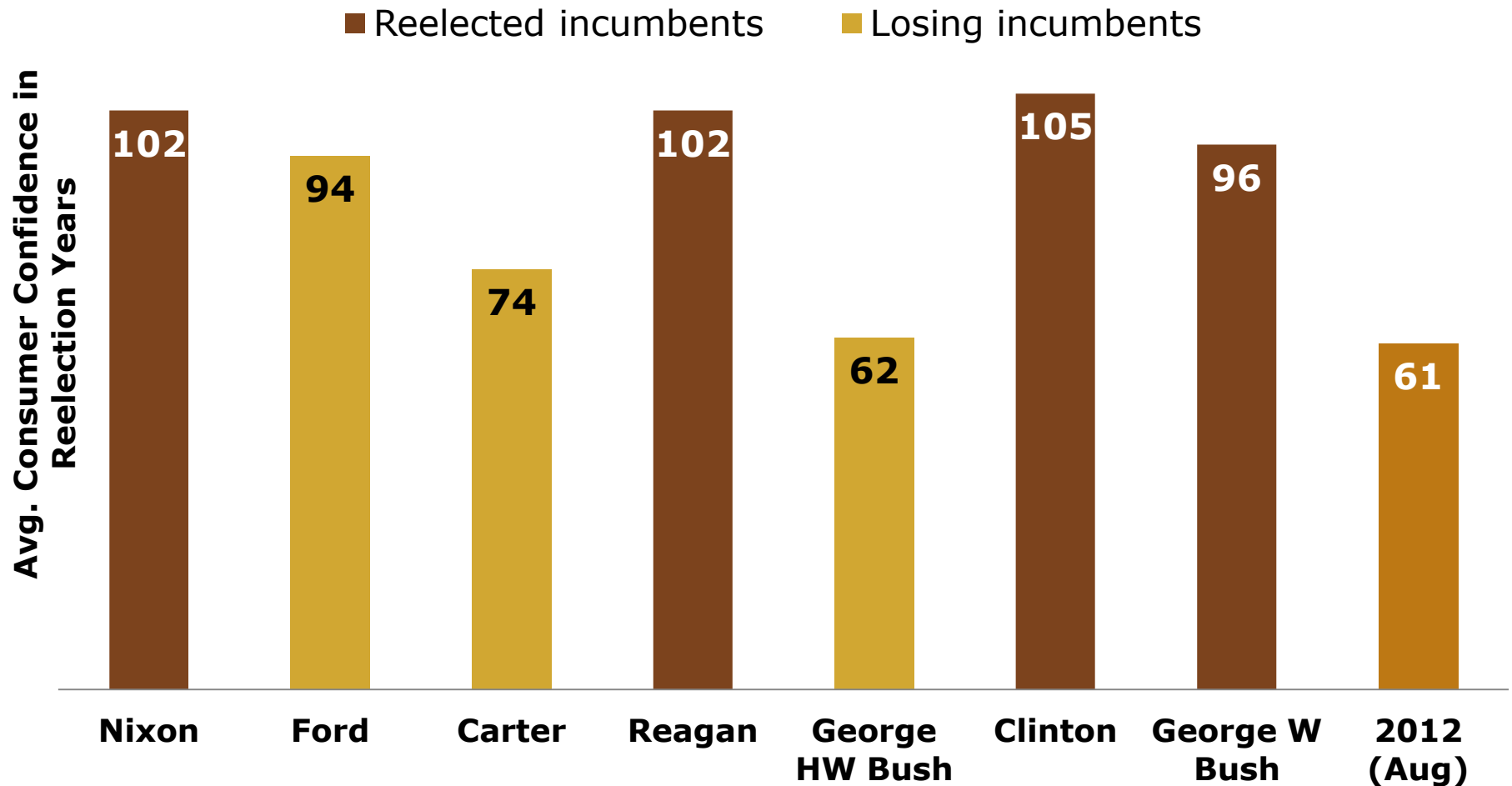
Swing States



Who Votes: The Gender Gap

	2004	2008
	%	%
Total	63.8	63.6
White	67.2	66.1
Black	60.0	64.7
Hispanic	47.2	49.9
Asian	44.1	47.6
Men	62.1	61.5
Women	65.4	65.7
18-24	46.7	48.5
25-44	60.1	60.0
45-74	71.0	69.8
75+	68.5	67.8

Consumer Confidence and Presidential Elections



Data sources: Conference Board, Bloomberg, Bureau of Labor Statistics
Taken from Council on Foreign Relations; Pew Research Center

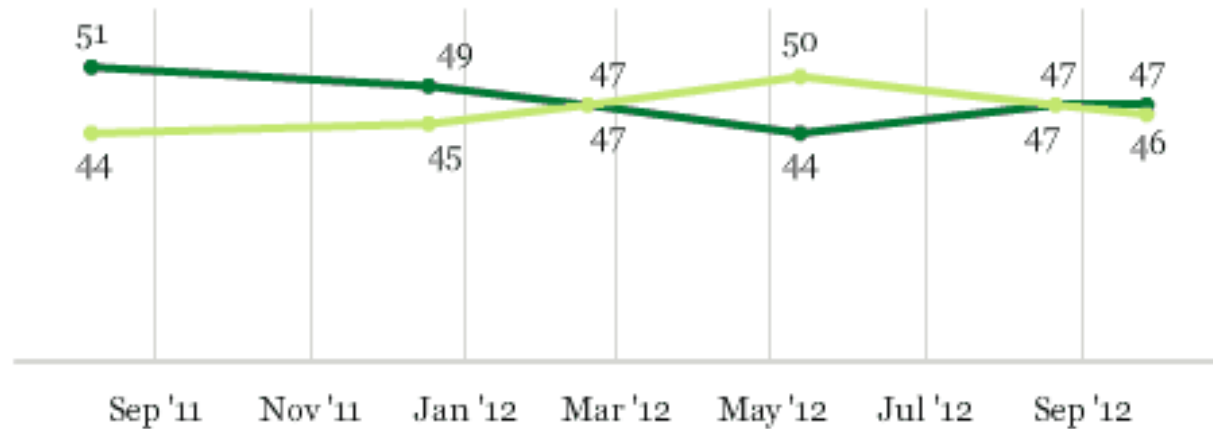
Congress: Just as Close

Congressional Vote Preferences

Based on registered voters

■ % Democratic

■ % Republican

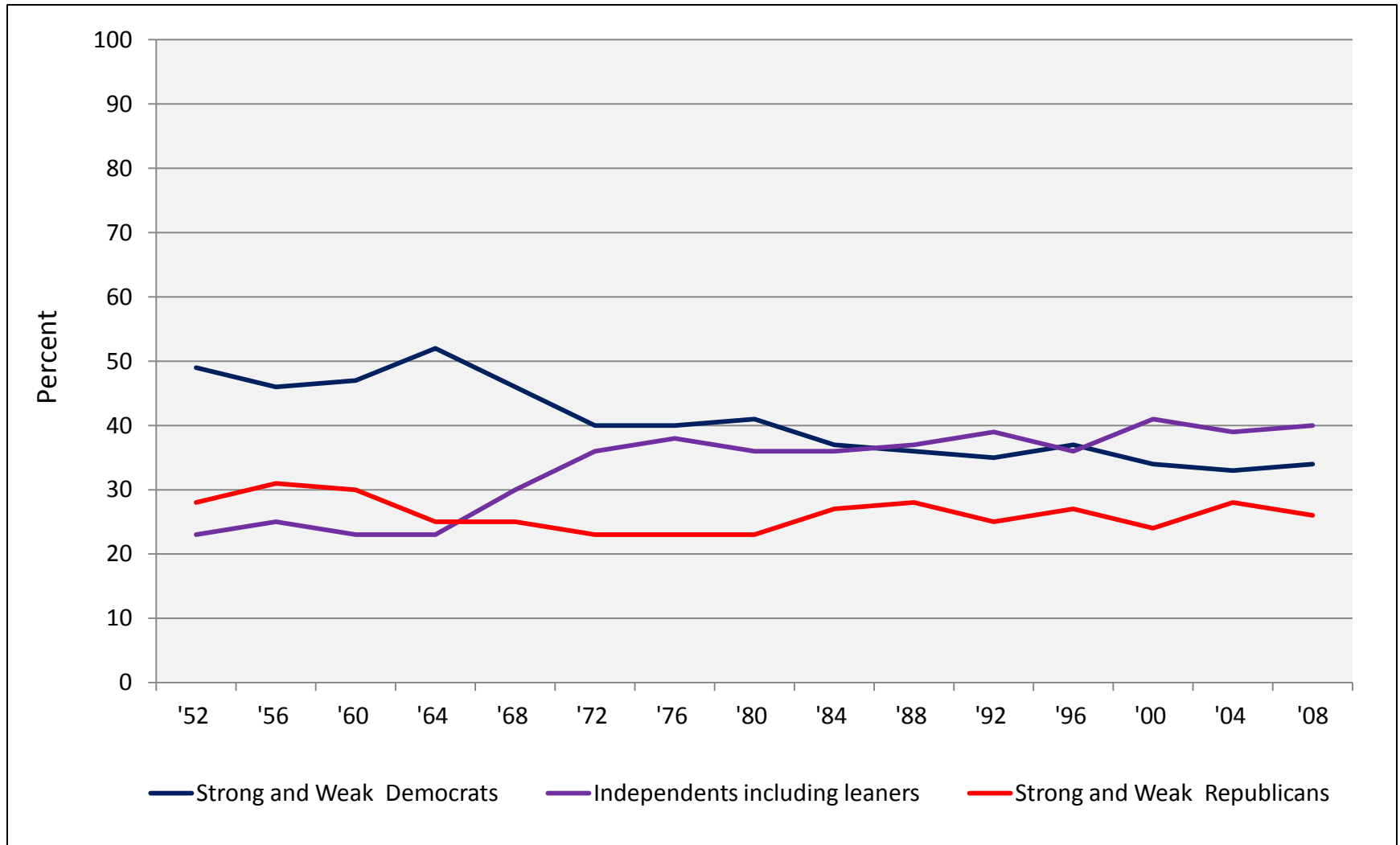


GALLUP®

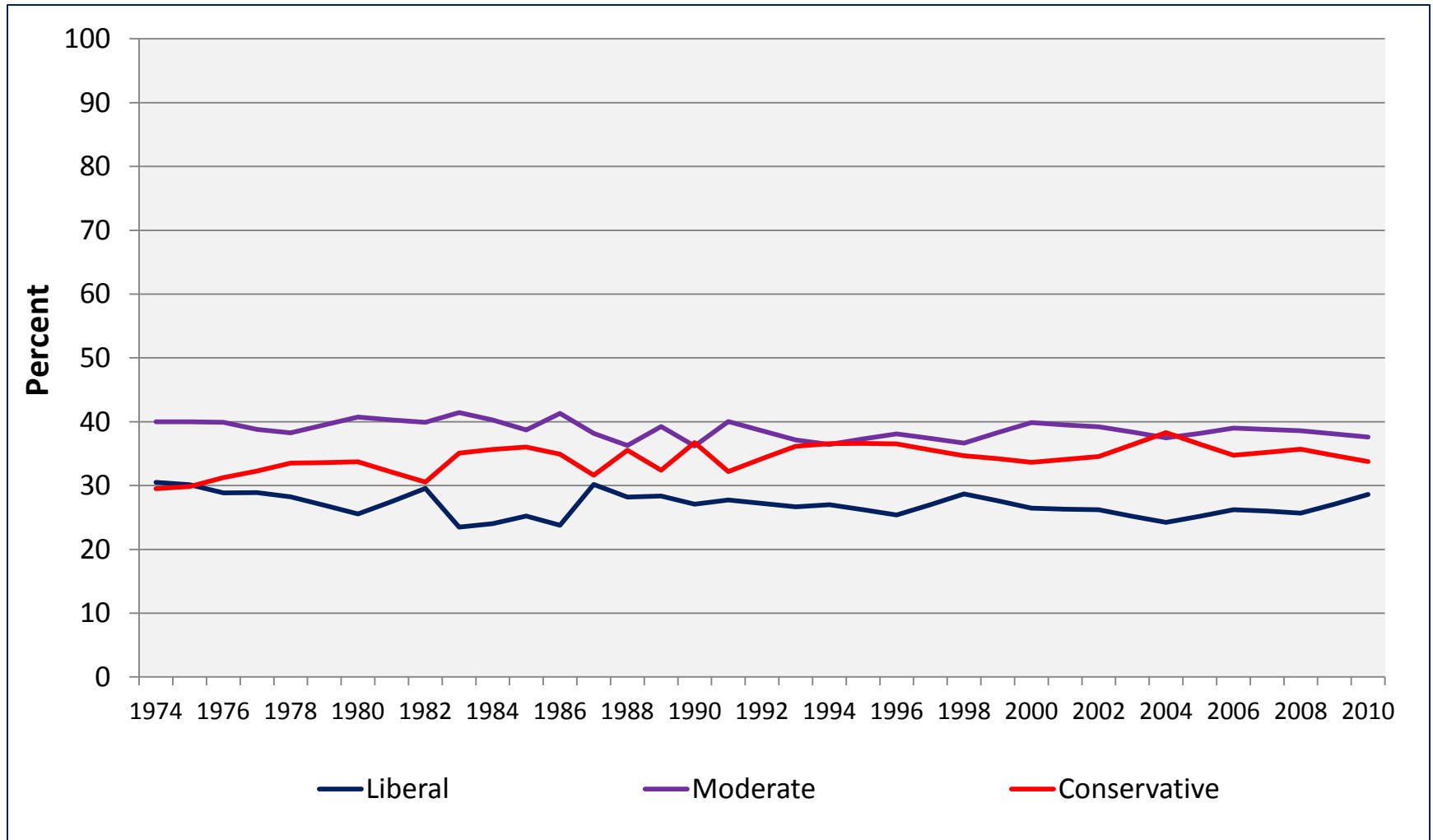
Divided Government: The Norm

Year	Congress	President	Senate (100)	House (435)
2011	112th	D	D: 56-42-2	R: 241-193
2009	111th	D	D – 57***	D – 256
2007	110th	R	D – 49**	D – 233
2005	109th	R	R – 55	R – 232
2003	108th	R	R – 51	R – 229
2001	107th	R	D*	R – 221
1999	106th	D	R – 55	R – 223
1997	105th	D	R – 55	R – 228
1995	104th	D	R – 52	R – 230
1993	103rd	D	D – 57	D – 258
1991	102nd	R	D – 56	D – 267
1989	101st	R	D – 55	D – 260
1987	100th	R	D – 55	D – 258
1985	99th	R	R – 53	D – 253
1983	98th	R	R – 54	D – 269
1981	97th	R	R – 53	D – 242

No Increase in Partisanship



...Or Ideology



Institutions in Trouble

Confidence in Institutions

Now I am going to read you a list of institutions in American society. Please tell me how much confidence you, yourself, have in each one -- a great deal, quite a lot, some, or very little?

	% Great deal/ Quite a lot	% Some	% Very little/ None
The military	78	16	3
Small business	64	26	8
The police	56	30	13
The church or organized religion	48	29	22
The medical system	39	35	26
The U.S. Supreme Court	37	41	20
The presidency	35	28	36
The public schools	34	38	27
The criminal justice system	28	42	29
Newspapers	28	40	31
Television news	27	40	32
Banks	23	40	36
Organized labor	21	39	37
Big business	19	41	39
Health maintenance organizations (HMOs)	19	39	39
Congress	12	40	48

Gallup, June 9-12, 2011